

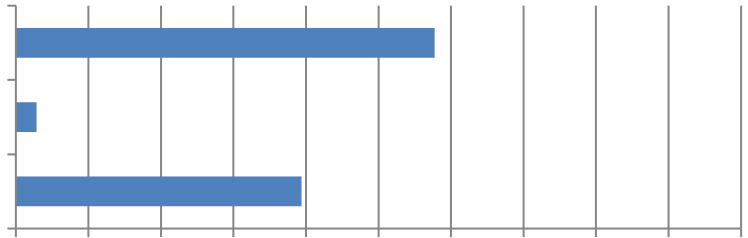
2022

4. How many construction worker fatalities resulted from these crashes? (417 Responses)

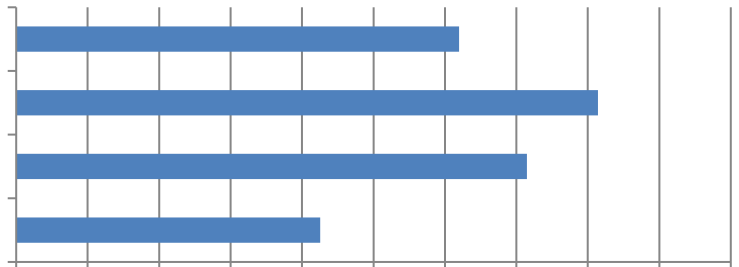
5. How many driver or passenger fatalities resulted from these crashes? (342 Responses)

6.

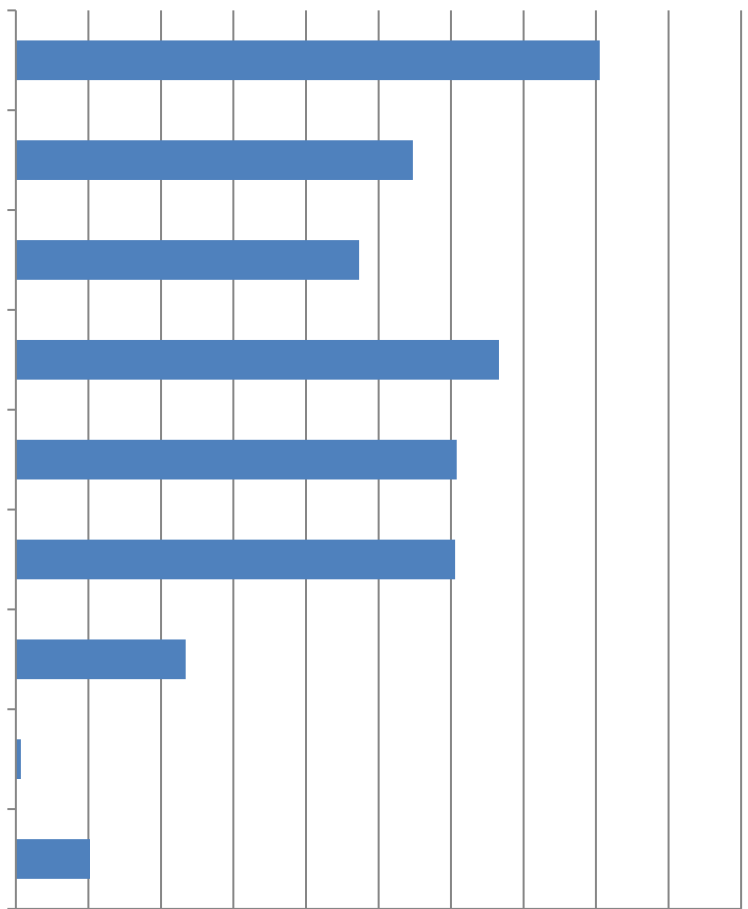
7. In your opinion, how much of a risk are highway work zone crashes now compared to one year ago?  
(419 Responses)



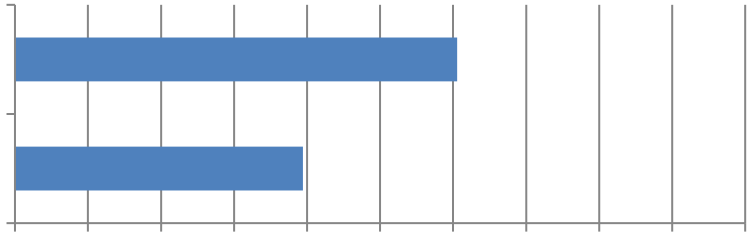
8. Why do you think highway work zone construction is more dangerous today compared to one year ago?  
(242 Responses)



9. Would any of these measures help reduce the number of highway work zone crashes, injuries and/or fatalities?  
(431 Responses)



10. Has there been an increase in work zone crashes when performing night work? (213 Responses)



11. If you answered yes, what do you attribute this to? (128 Responses)

