

*Total Responses: 19. Responses varied for some questions. Percentages are based on responses to each question and may not sum to 100 due to rounding.*

All projects	80%	0%	20%	80%
Private Office	65%	0%	35%	65%
Retail, Warehouse, Lodging	60%	0%	40%	60%

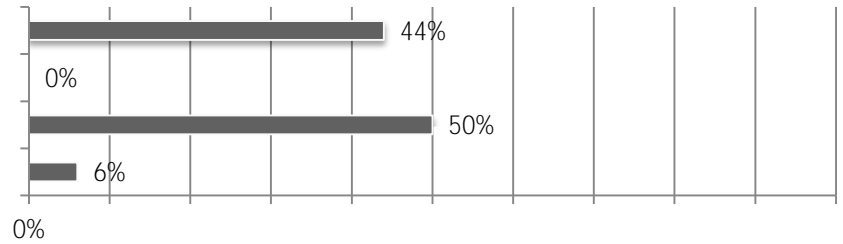
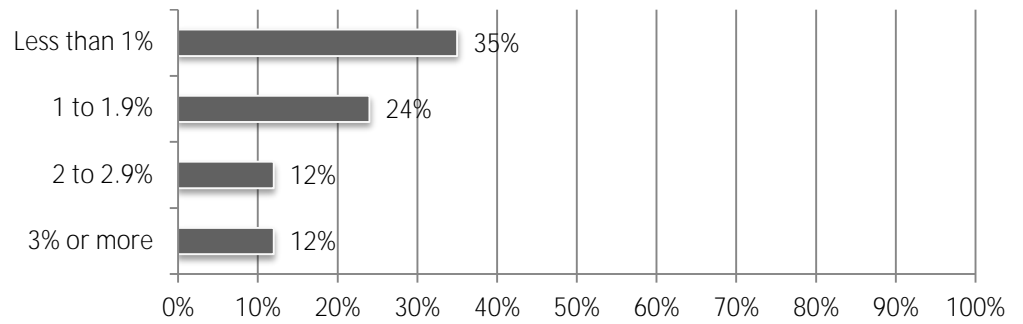
*\*Net equals difference between number of "Higher" and "Lower" responses as percent of total.*











Accounting software	19%	75%	0%	6%
Building Information Modeling	19%	56%	6%	19%
Client relationship management software	29%	47%	12%	12%
Document management software	29%	53%	6%	12%
Estimating software	31%	63%	0%	6%
Fleet tracking/management software	14%	50%	7%	29%
Human resources software	25%	63%	0%	13%
Payroll software	0%	88%	0%	12%
Prequalification software	0%	79%	0%	21%
Project collaboration software	19%	56%	0%	25%
Project management software	44%	44%	0%	13%
Scheduling software	44%	38%	0%	19%
Service management software	7%	67%	0%	27%
Subcontractor bid management/IT B software	7%	67%	0%	27%

